



PROJECT | RICCIONE

| GOETHE AND SHAKESPEARE WALK RESTYLING |

01

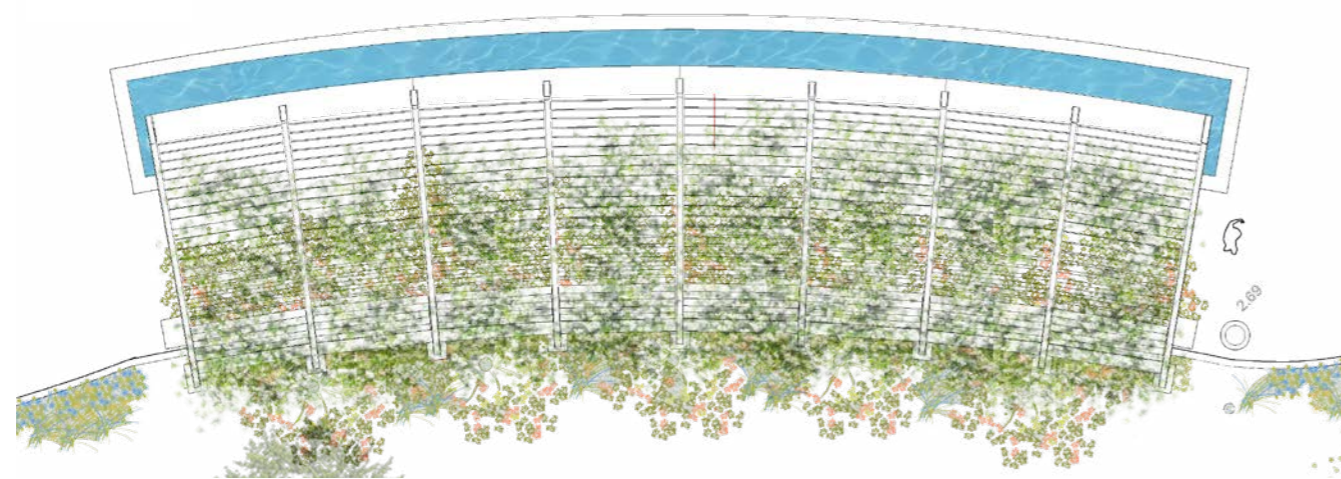
THE PROJECT

The restyling of Lungomare Goethe in Riccione is a very successful redevelopment of the northern area between Piazzale Azzarita and the bridge over the Rio Marano. The new Lungomare is exclusively pedestrian and has small squares, fountains and verdant flowerbeds, very close to the sea. Today it is possible to walk for about 1,300 meters among the fresh scent of greenery, the elegant white design of furnishings and structures, and the colors of the many flowers that brighten up the beautiful flowerbeds.



RICCIONE

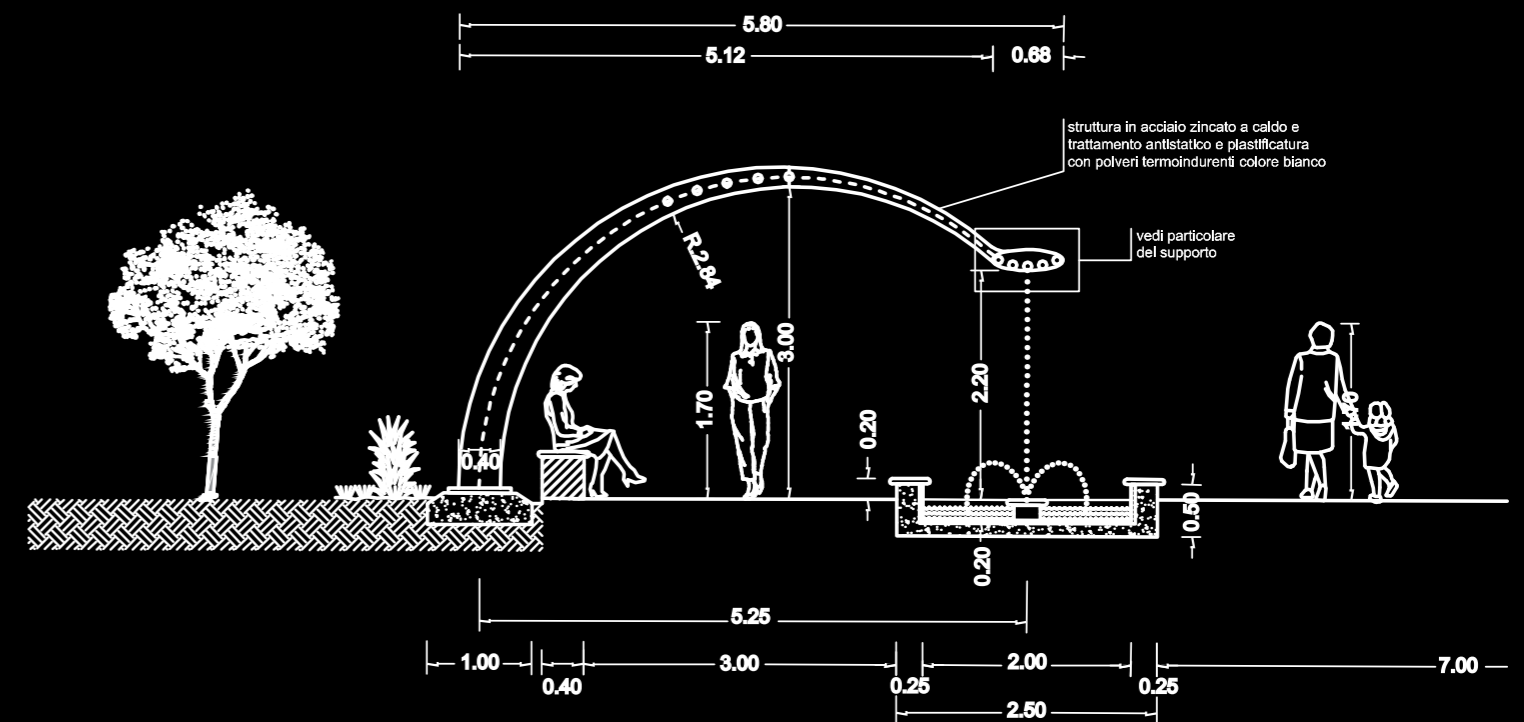
GOETHE AND SHAKESPEARE WALK RESTYLING



Sophisticated Design

The elegant furnishings with a refined but at the same time functional design (the music wafts from the benches and the leaves are shading by day and lit by LEDs at night-time), are the characteristic elements of a successful work that gives further style to the city, in an innovative way.

- Preliminary project: Technical Office of the Municipality of Riccione
- Executive project : POLISTUDIO A.E.S. (Architectural design Arch. Pietro Marsciani)
- Works Management: Geom. Augusto Frisoni and Arch. Giovanni Morri (Municipality of Riccione)
- Supervision on architectural choices: Renata Tosi and Arch. Lea Ermeti
- Executing companies: LUCOS (Surveyor Orazio Del Prete) – CBR
- Metal structure made by “Carpenteria Battistini”



UNIQUE ELEMENTS

A pleasant linearity is perceived between materials and natural colors, between soft and irregular shapes. The fountain that lights up its colors on the waterfall has become a real night-time attraction.

THE FOUNTAIN

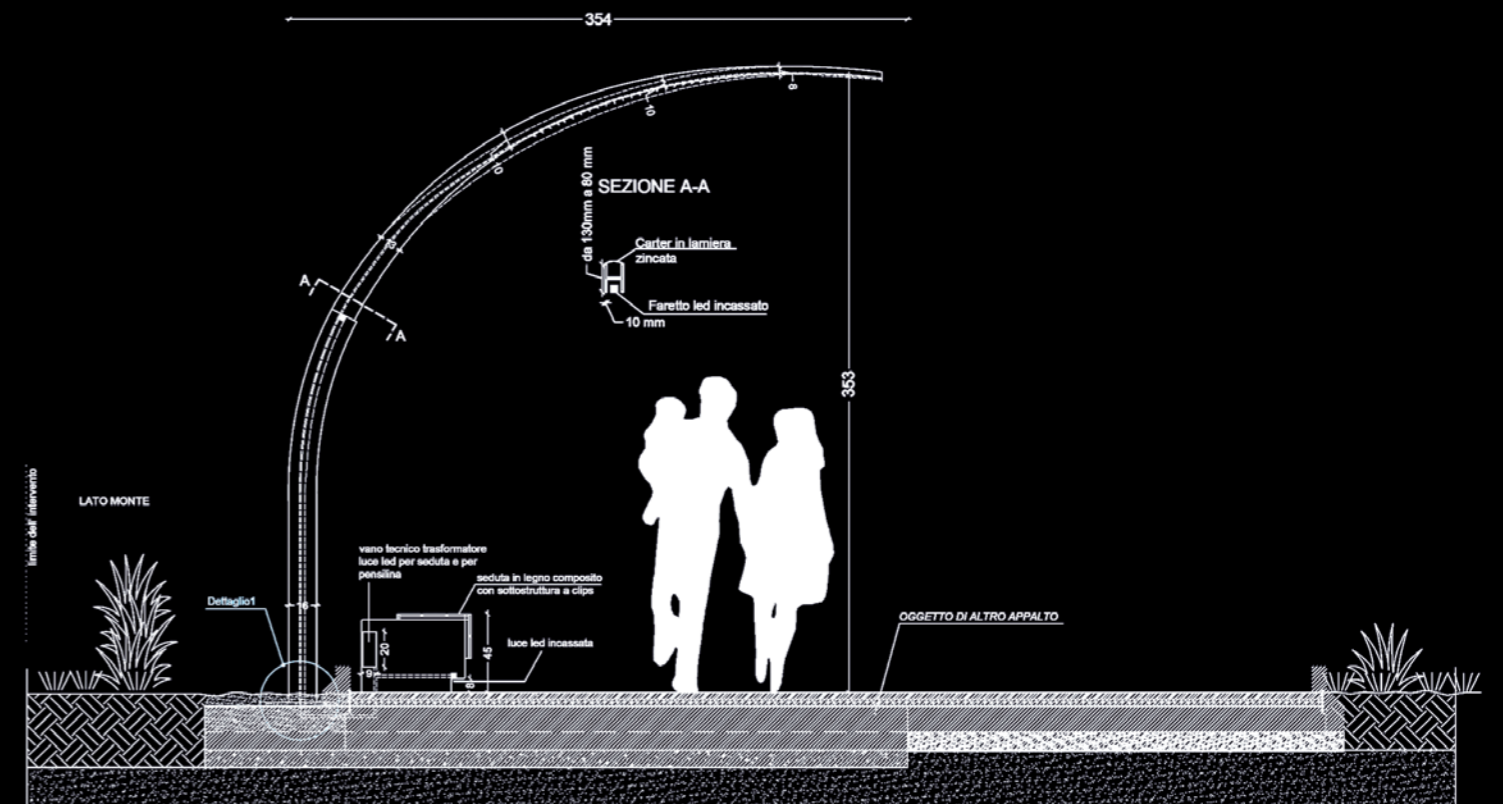
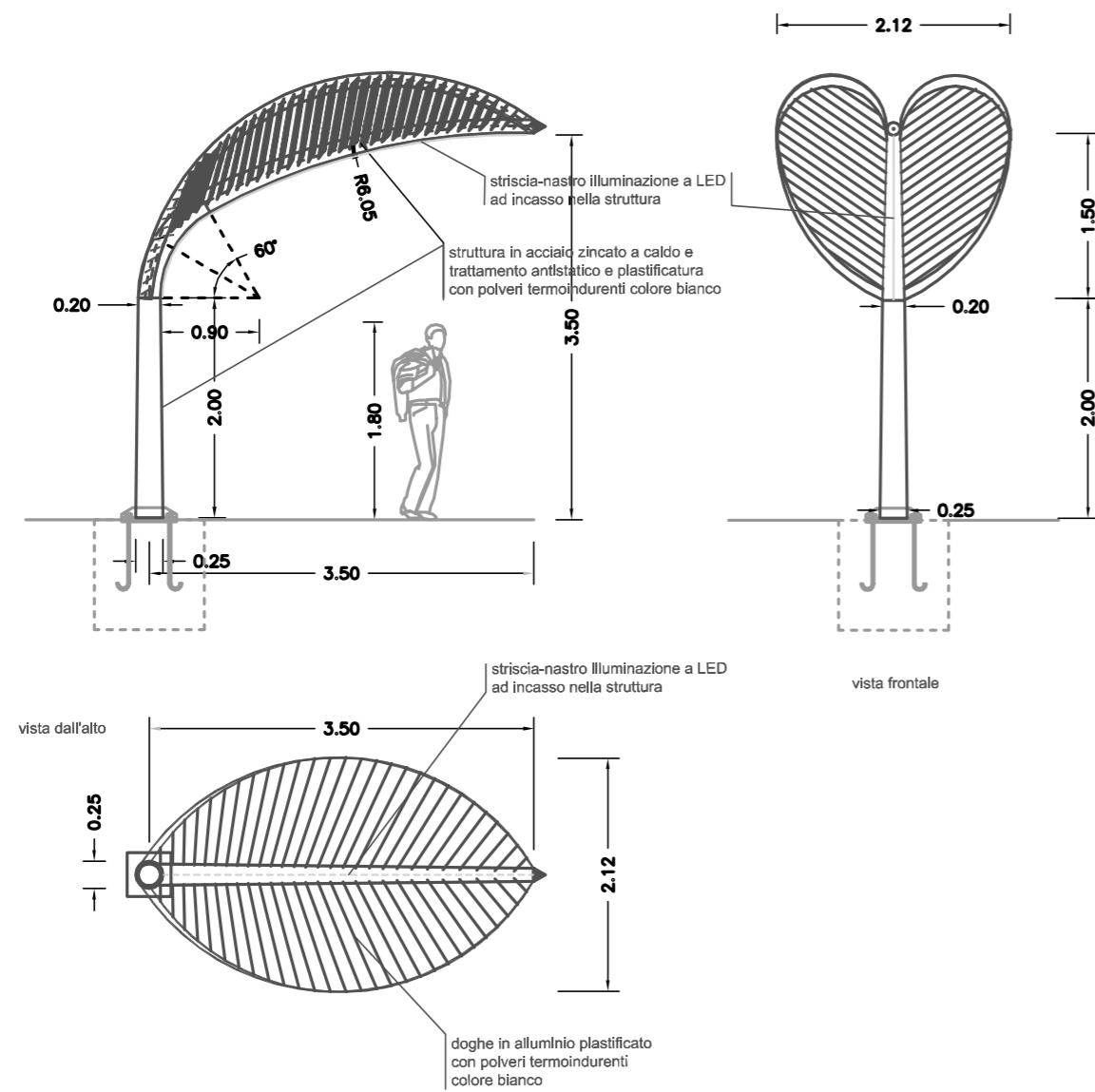
is composed by:

- An imposing metal shelter that works as a shade and as a fountain (from here the cascade of water descends and the color lights are installed).
- The basin of the fountain, with the perimeter edges covered in honed Carrara white high-performance concrete.
- The seat with a length of 21 linear meters is made on site in VUD01 smoothed Carrara white high-performance concrete; complete with seats in wood-effect wpc slats, led lighting and sound system.





CREATING a magical atmosphere



PROSPETTO FOGLIA
SCALA 1:20

LEAF STRUCTURE

These elements are made of hot galvanized and painted steel. They provide shade during the day and light up in the evening, creating a magical atmosphere.





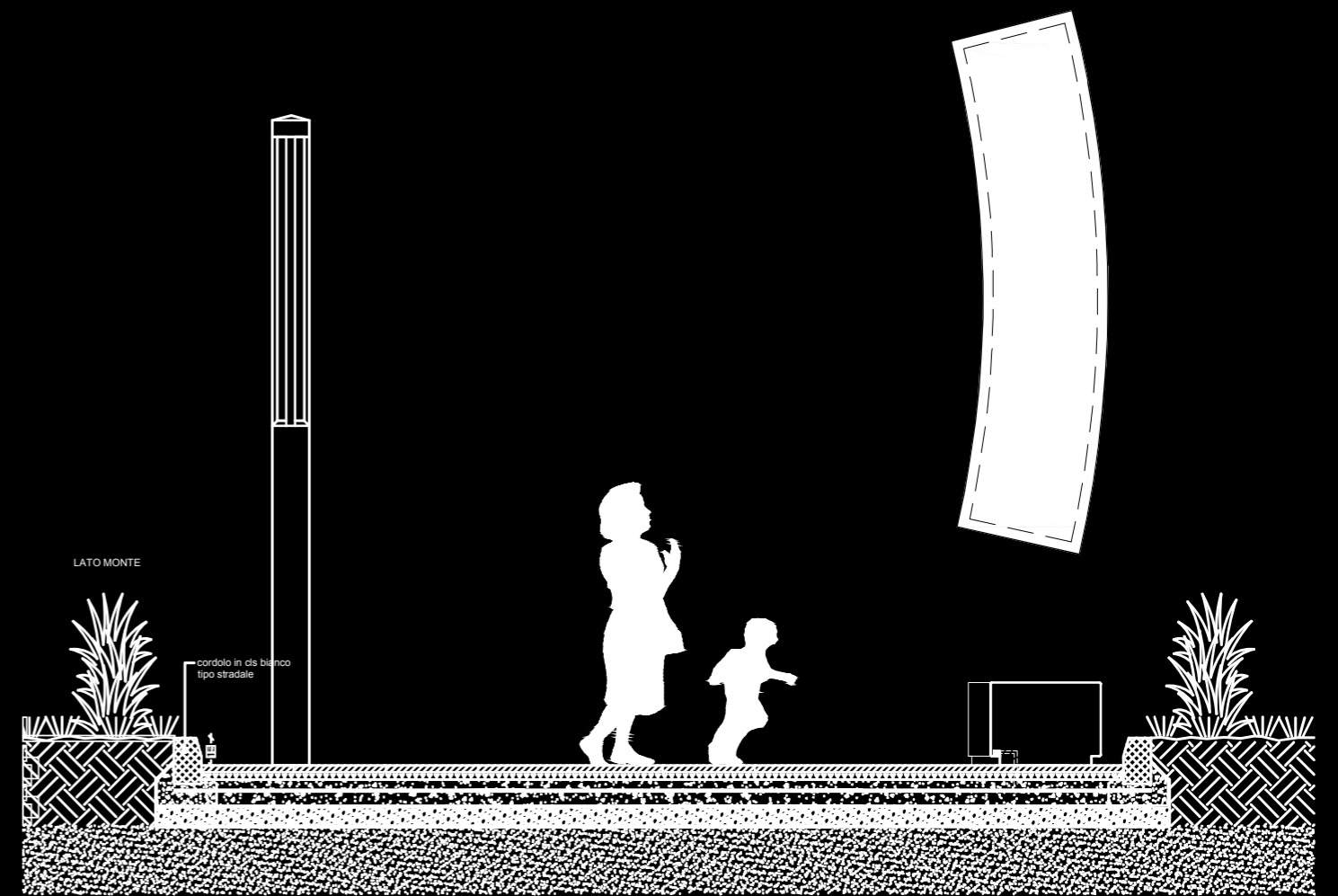
LED ILLUMINATION

and sound diffusion system...
more than a simple seat



CURVED and STRAIGHT METROPOLITAN SEAT

The Metropolitan seats can be both linear and curved, with three different bend radius. They are made of completely smoothed and anti-graffiti treated VUD01 Carrara white high-performance concrete; they are always equipped with flat seats made of high quality wpc slats and AISI 304 stainless steel frame, LED lighting and a sound diffusion system located inside the bench.



CURVED and STRAIGHT METROPOLITAN





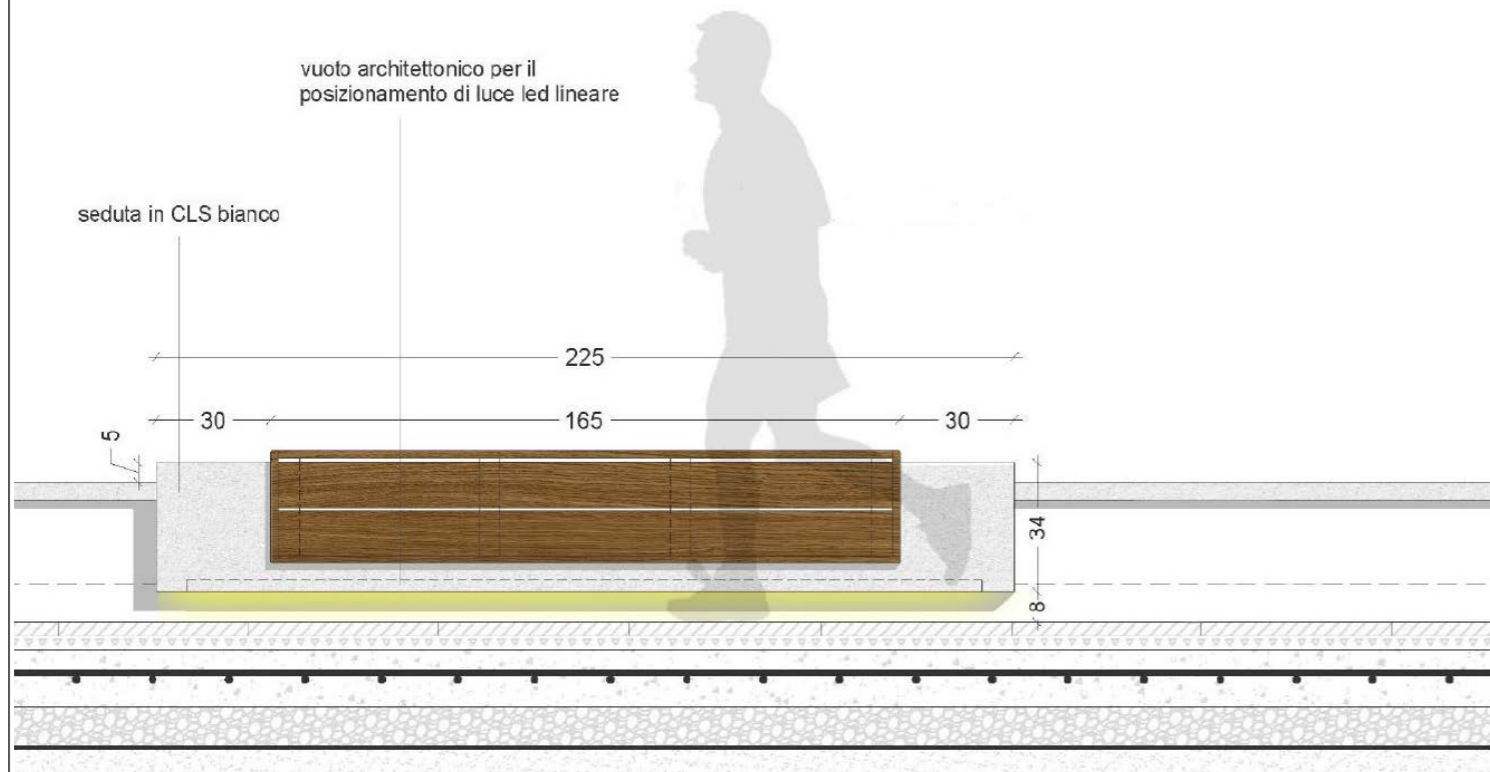


LIGHTNESS

of the lines and quality of the materials

The Cover seats on the wall divide the area of the Lungomare promenade from the seaside.

They are made of completely smoothed and anti-graffiti treated VUD01 Carrara white high-performance concrete; they are equipped with flat seats or with backrests, made of high quality wpc slats, with a wood effect and AISI 304 stainless steel frame, LED lighting and a sound diffusion system located inside the bench.

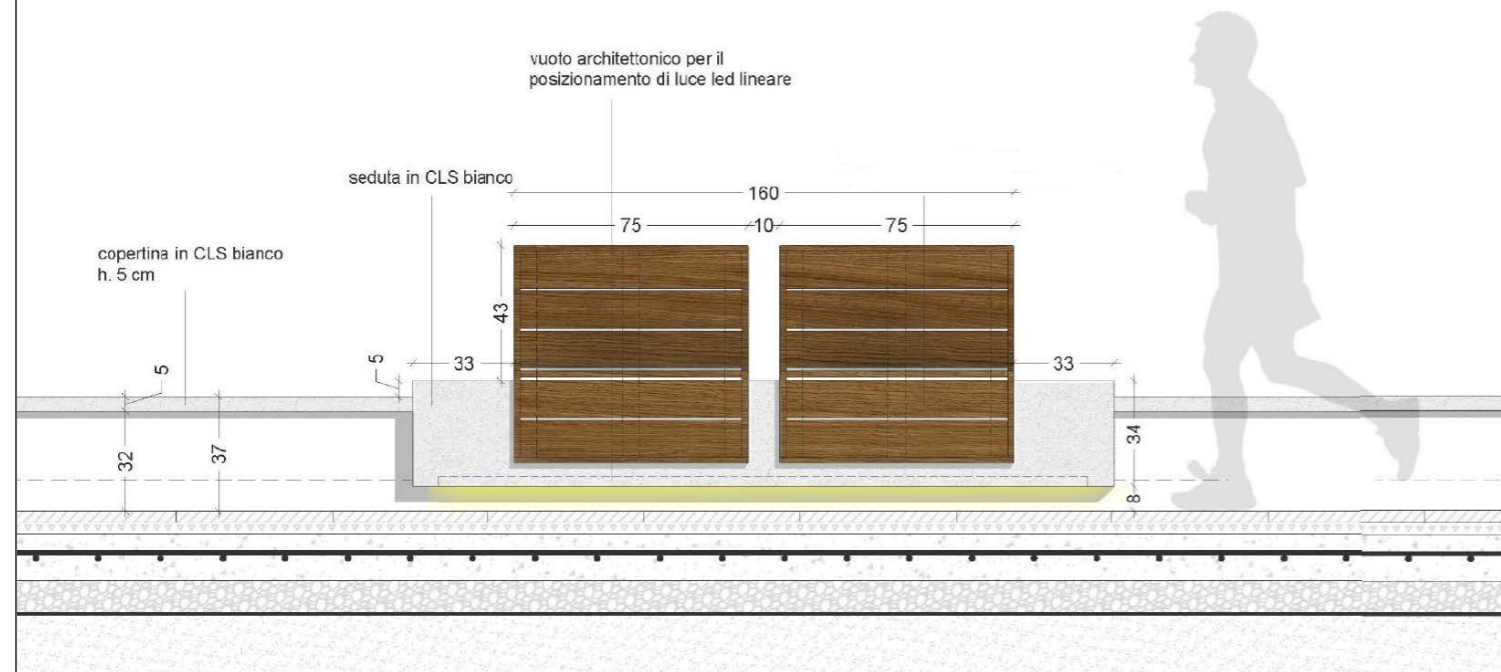
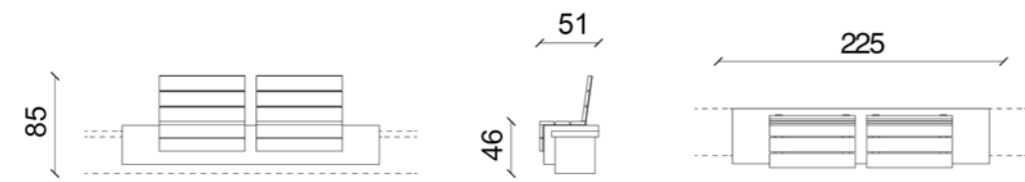




A SIMPLE and INNOVATIVE DESIGN

gives style to the waterfront

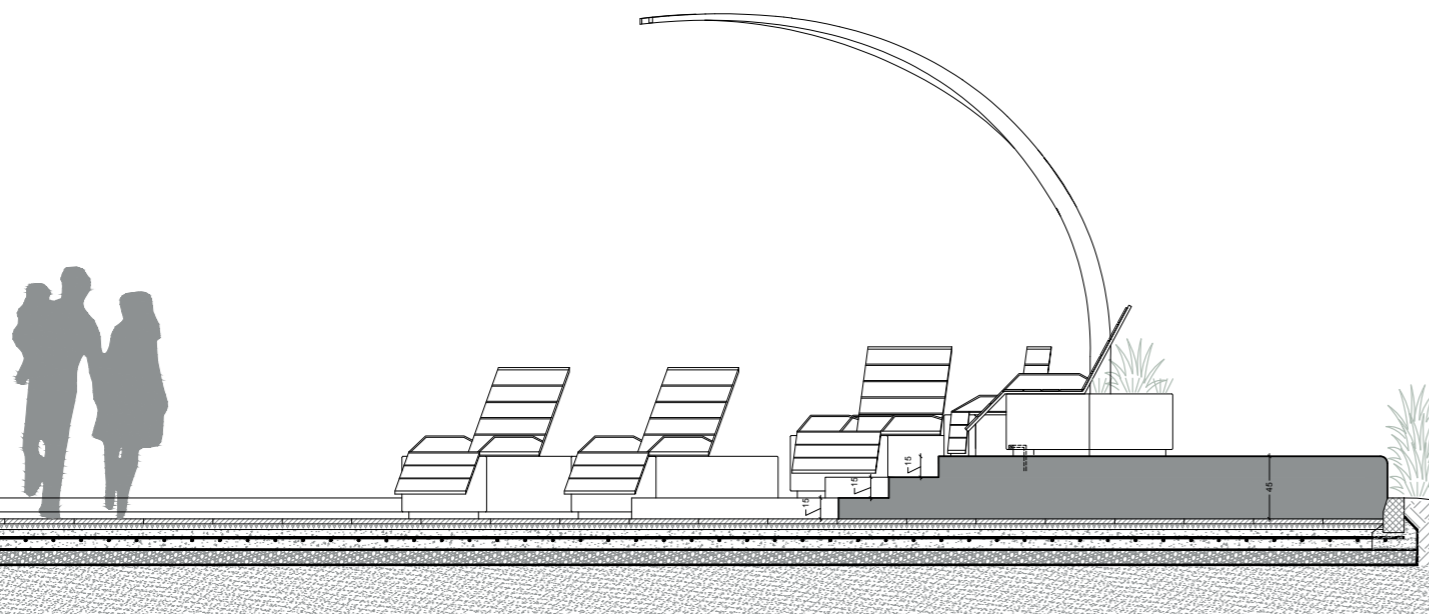
The Cover seats can be adapted to existing walls or can be positioned independently with self-supporting modules.



WALKING and... relaxing

Relax single seats, composed of a base made of VUD01 high-performance concrete in completely smoothed and anti-graffiti treated white Carrara color, and of an inclined seat (Relax in fact) made of high quality wpc slats with a wood effect and frame in electropolished AISI 304 stainless steel.

RELAX SINGLE SEATS





MONOLITHIC,
an organic shape
that seems designed by nature
... the NUVOLA range

Organic shape Nuvola small planters, made of completely smoothed and anti-graffiti treated VUD01 Carrara white high-performance concrete.



REVOLUTIONARY,
unconventional and
far from the standards
of the usual seats.

Monolithic Nuvola medium seats and Nuvola poufs, made of completely smoothed and anti-graffiti treated VUD01 Carrara white high-performance concrete.

